

How to create national datasets for Scotland, Wales, Northern Ireland and England and define them in UKMOD

Date: January 2022

This file contains information for creating national datasets for England, Wales, Scotland and Northern Ireland from the pooled UK datasets, and define them in UKMOD for national analysis. The advantage of using national datasets is only to save time loading the data when running UKMOD.

1. Create the national datasets

To create national datasets using Stata, run the following stata commands:

1. Import UK pooled dataset:

```
insheet using "...\Input\UK_2019_b1.txt"
```

where the full path of the input folder should be given.

2. Keep households from relevant nation:

- England:
`keep if drgn1<11`
- Wales:
`keep if drgn1==11`
- Scotland:
`keep if drgn1==12`
- Northern Ireland:
`keep if drgn1==13`

3. Make sure that all the id variables are in the double format:

```
format %15.0g id*
```

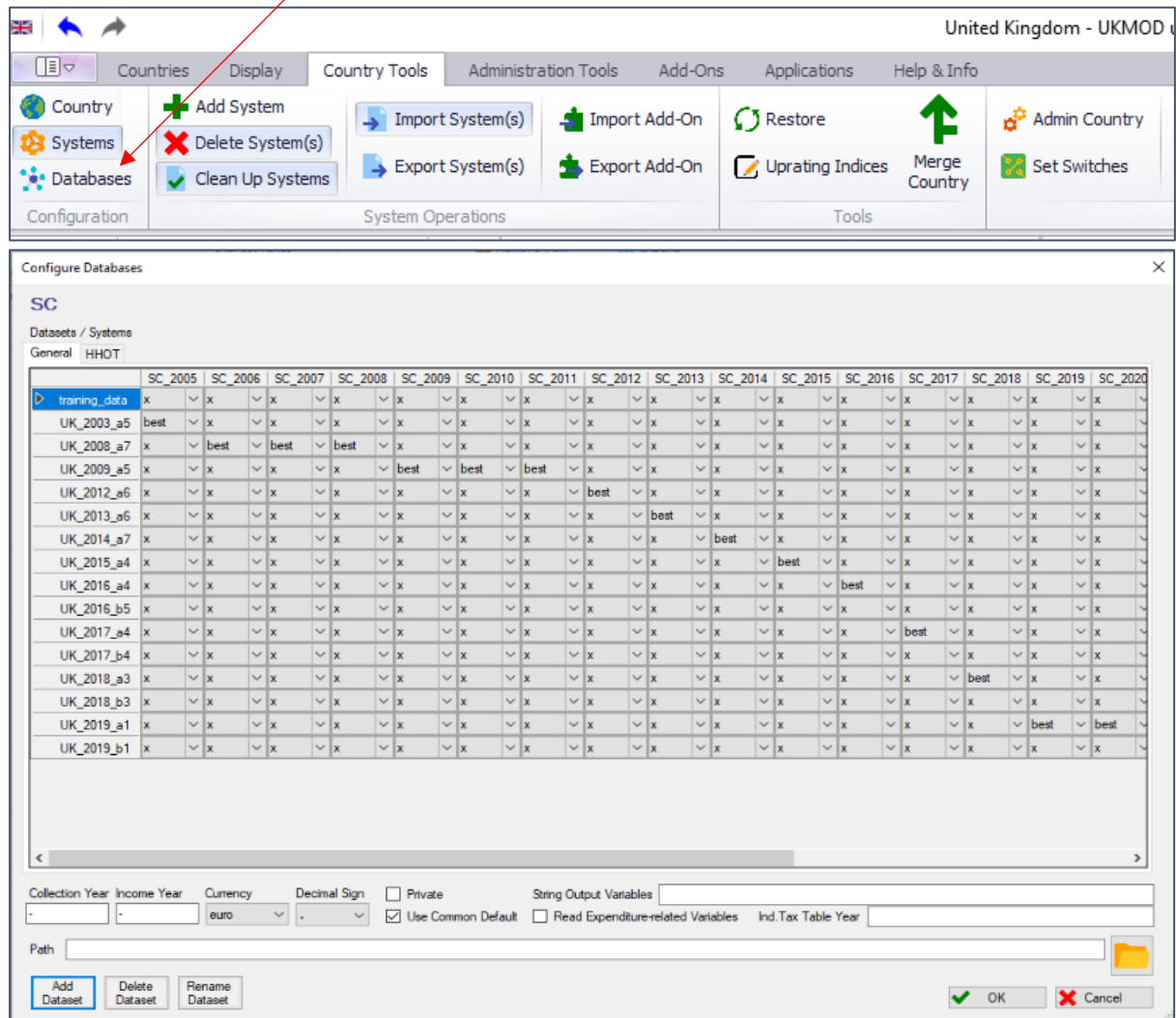
4. Export national dataset:

```
outsheet using "...\Input\xx_2019_a1.txt", replace
```

where 'xx' should be replaced with an identifier of your choice (e.g. 'en' for England, 'wl' for Wales, 'sc' for Scotland, 'ni' for Northern Ireland), and the full path of the input folder should be given.

2. Configure the national datasets in UKMOD

1. In UKMOD, click to the relevant country (England, Wales, Scotland, Northern Ireland), then go to Country tools > Databases:



(the figure displays the example of Scotland)

- Click on 'Add dataset' Select the relevant national datasets from the input folder, then define Collection Year, Income Year and Currency (no need to modify the other default values):

Configure Databases

SC

Datasets / Systems

General HHOT

	SC_2005	SC_2006	SC_2007	SC_2008	SC_2009	SC_2010	SC_2011	SC_2012	SC_2013	SC_2014	SC_2015	SC_2016	SC_2017	SC_2018	SC_2019	SC_2020
sc_2019_b1	x	x	x	x	x	x	x	x	x	x	x	x	x	x	best	best
training_data	x	x	x	x	x	x	x	x	x	x	x	x	x	x	x	x
UK_2003_a5	best	x	x	x	x	x	x	x	x	x	x	x	x	x	x	x
UK_2008_a7	x	best	best	best	x	x	x	x	x	x	x	x	x	x	x	x
UK_2009_a5	x	x	x	x	best	best	best	x	x	x	x	x	x	x	x	x
UK_2012_a6	x	x	x	x	x	x	x	best	x	x	x	x	x	x	x	x
UK_2013_a6	x	x	x	x	x	x	x	x	best	x	x	x	x	x	x	x
UK_2014_a7	x	x	x	x	x	x	x	x	best	x	x	x	x	x	x	x
UK_2015_a4	x	x	x	x	x	x	x	x	x	best	x	x	x	x	x	x
UK_2016_a4	x	x	x	x	x	x	x	x	x	x	best	x	x	x	x	x
UK_2016_b5	x	x	x	x	x	x	x	x	x	x	x	best	x	x	x	x
UK_2017_a4	x	x	x	x	x	x	x	x	x	x	x	best	x	x	x	x
UK_2017_b4	x	x	x	x	x	x	x	x	x	x	x	x	best	x	x	x
UK_2018_a3	x	x	x	x	x	x	x	x	x	x	x	x	best	x	x	x
UK_2018_b3	x	x	x	x	x	x	x	x	x	x	x	x	x	best	x	x
UK_2019_a1	x	x	x	x	x	x	x	x	x	x	x	x	x	x	best	x
UK_2019_b1	x	x	x	x	x	x	x	x	x	x	x	x	x	x	x	best

Collection Year: 2019/20 Income Year: 2019 Currency: national Decimal Sign: . Private: ☐ Use Common Default: ☐ Read Expenditure-related Variables: ☐ Ind.Tax Table Year:

Path:

Add Dataset Delete Dataset Rename Dataset

OK Cancel

(the figure displays the example of Scotland)

3. Select the policy systems for which you want to define the new datasets (use 'best' match if you want to alter the default, otherwise select 'x'):

Configure Databases

SC

Datasets / Systems

General HHOT

	SC_2005	SC_2006	SC_2007	SC_2008	SC_2009	SC_2010	SC_2011	SC_2012	SC_2013	SC_2014	SC_2015	SC_2016	SC_2017	SC_2018	SC_2019	SC_2020
sc_2019_b1	x	x	x	x	x	x	x	x	x	x	x	x	x	x	best	best
training_data	x	x	x	x	x	x	x	x	x	x	x	x	x	x	x	x
UK_2003_a5	best	x	x	x	x	x	x	x	x	x	x	x	x	x	x	x
UK_2008_a7	x	best	best	best	x	x	x	x	x	x	x	x	x	x	x	x
UK_2009_a5	x	x	x	x	best	best	best	x	x	x	x	x	x	x	x	x
UK_2012_a6	x	x	x	x	x	x	x	best	x	x	x	x	x	x	x	x
UK_2013_a6	x	x	x	x	x	x	x	best	x	x	x	x	x	x	x	x
UK_2014_a7	x	x	x	x	x	x	x	x	best	x	x	x	x	x	x	x
UK_2015_a4	x	x	x	x	x	x	x	x	x	best	x	x	x	x	x	x
UK_2016_a4	x	x	x	x	x	x	x	x	x	x	best	x	x	x	x	x
UK_2016_b5	x	x	x	x	x	x	x	x	x	x	x	x	x	x	x	x
UK_2017_a4	x	x	x	x	x	x	x	x	x	x	x	best	x	x	x	x
UK_2017_b4	x	x	x	x	x	x	x	x	x	x	x	x	x	x	x	x
UK_2018_a3	x	x	x	x	x	x	x	x	x	x	x	x	best	x	x	x
UK_2018_b3	x	x	x	x	x	x	x	x	x	x	x	x	x	x	x	x
UK_2019_a1	x	x	x	x	x	x	x	x	x	x	x	x	x	x	x	x
UK_2019_b1	x	x	x	x	x	x	x	x	x	x	x	x	x	x	x	x

Collection Year: 2019/20 Income Year: 2019 Currency: national Decimal Sign: . Private: ☐ String Output Variables:

Use Common Default: ☐ Read Expenditure-related Variables: ☐ Ind. Tax Table Year:

Path:

Add Dataset Delete Dataset Rename Dataset

OK Cancel

(the figure displays the example of Scotland)

4. (a) Click 'OK'. A pop-up window will appear:

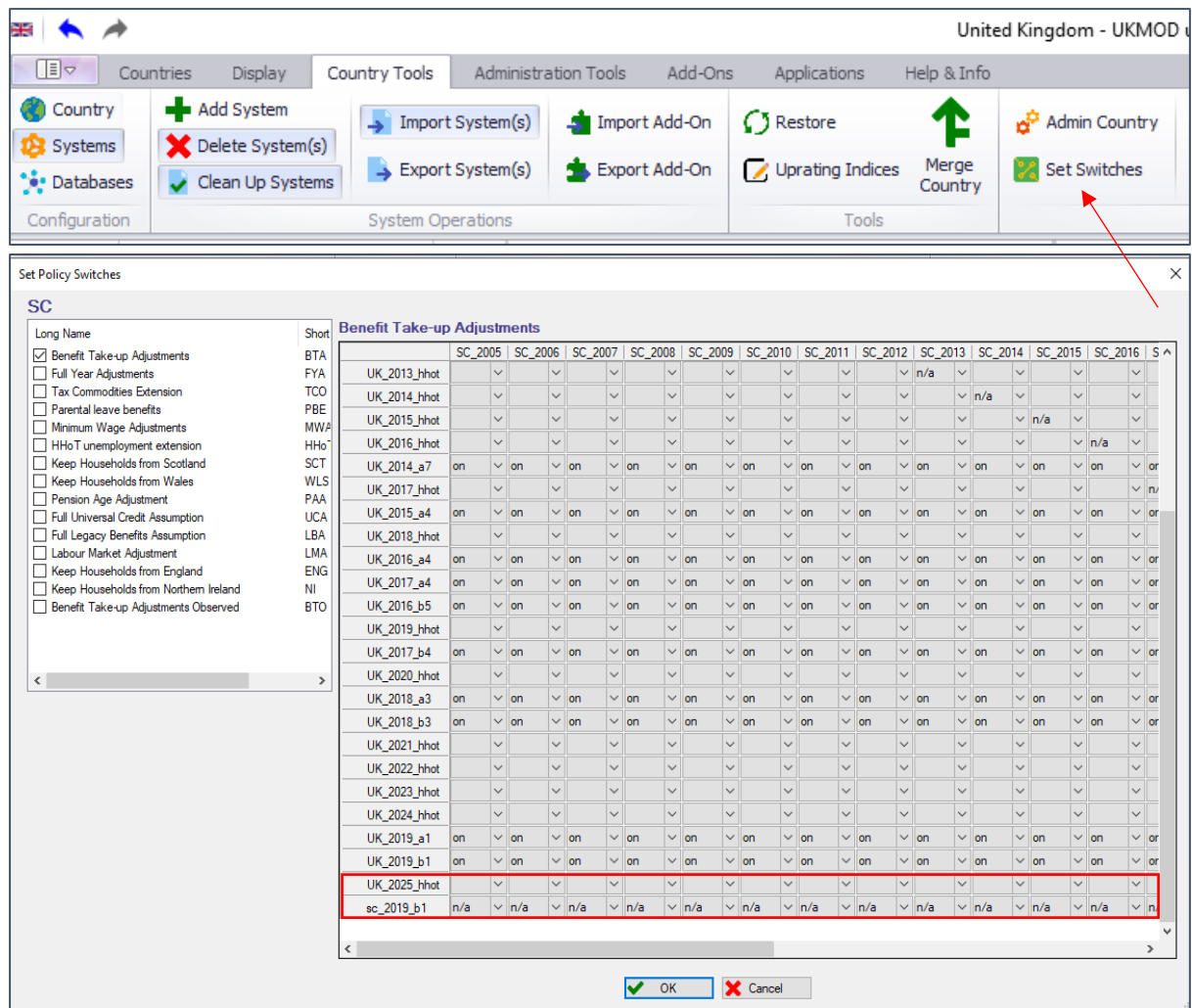
UKMOD - Request

Do you want to define Policy Switches for the new dataset(s) now?

Yes No

Click Yes

5. (b) If by error you click 'No', go to Open Country tools > Set switches:



(the figure displays the example of Scotland)

By default 'n/a' is selected for all policy systems for which the new dataset has been defined.

- For all switched copy the default values for the pooled dataset that you used to create the national datasets to set the corresponding values for the new national datasets:

Set Policy Switches

SC

Long Name

☒ Benefit Take-up Adjustments

☐ Full Year Adjustments

☐ Tax Commodities Extension

☐ Parental leave benefits

☐ Minimum Wage Adjustments

☐ HHoT unemployment extension

☐ Keep Households from Scotland

☐ Keep Households from Wales

☐ Pension Age Adjustment

☐ Full Universal Credit Assumption

☐ Full Legacy Benefits Assumption

☐ Labour Market Adjustment

☐ Keep Households from England

☐ Keep Households from Northern Ireland

☐ Benefit Take-up Adjustments Observed

Short

BTA

FYA

TCO

PBE

MW/A

HHoT

SCT

WLS

PAA

UCA

LBA

LMA

ENG

NI

BTO

Benefit Take-up Adjustments

	SC_2005	SC_2006	SC_2007	SC_2008	SC_2009	SC_2010	SC_2011	SC_2012	SC_2013	SC_2014	SC_2015	SC_2016	S
UK_2013_hhot	✓	✓	✓	✓	✓	✓	✓	✓	n/a	✓	✓	✓	✓
UK_2014_hhot	✓	✓	✓	✓	✓	✓	✓	✓	✓	n/a	✓	✓	✓
UK_2015_hhot	✓	✓	✓	✓	✓	✓	✓	✓	✓	✓	n/a	✓	✓
UK_2016_hhot	✓	✓	✓	✓	✓	✓	✓	✓	✓	✓	✓	n/a	✓
UK_2014_a7	on	on	on	on	on	on	on	on	on	on	on	on	or
UK_2017_hhot	✓	✓	✓	✓	✓	✓	✓	✓	✓	✓	✓	✓	n/
UK_2015_a4	on	on	on	on	on	on	on	on	on	on	on	on	or
UK_2018_hhot	✓	✓	✓	✓	✓	✓	✓	✓	✓	✓	✓	✓	✓
UK_2016_a4	on	on	on	on	on	on	on	on	on	on	on	on	or
UK_2017_a4	on	on	on	on	on	on	on	on	on	on	on	on	or
UK_2016_b5	on	on	on	on	on	on	on	on	on	on	on	on	or
UK_2019_hhot	✓	✓	✓	✓	✓	✓	✓	✓	✓	✓	✓	✓	✓
UK_2017_b4	on	on	on	on	on	on	on	on	on	on	on	on	or
UK_2020_hhot	✓	✓	✓	✓	✓	✓	✓	✓	✓	✓	✓	✓	✓
UK_2018_a3	on	on	on	on	on	on	on	on	on	on	on	on	or
UK_2018_b3	on	on	on	on	on	on	on	on	on	on	on	on	or
UK_2021_hhot	✓	✓	✓	✓	✓	✓	✓	✓	✓	✓	✓	✓	✓
UK_2022_hhot	✓	✓	✓	✓	✓	✓	✓	✓	✓	✓	✓	✓	✓
UK_2023_hhot	✓	✓	✓	✓	✓	✓	✓	✓	✓	✓	✓	✓	✓
UK_2024_hhot	✓	✓	✓	✓	✓	✓	✓	✓	✓	✓	✓	✓	✓
UK_2019_a1	on	on	on	on	on	on	on	on	on	on	on	on	or
UK_2019_b1	on	on	on	on	on	on	on	on	on	on	on	on	or
UK_2025_hhot	✓	✓	✓	✓	✓	✓	✓	✓	✓	✓	✓	✓	✓
sc_2019_b1	on	on	on	on	on	on	on	on	on	on	on	on	or

OK Cancel

(the figure displays the example of Scotland)

- In particular, make sure that the relevant national switches ('Keep Households from: ...') is set to 'on':

Set Policy Switches

SC

Long Name

Short

Keep Households from Scotland

	SC_2005	SC_2006	SC_2007	SC_2008	SC_2009	SC_2010	SC_2011	SC_2012	SC_2013	SC_2014	SC_2015	SC_2016	S
UK_2013_hhot	✓	✓	✓	✓	✓	✓	✓	✓	on	✓	✓	✓	✓
UK_2014_hhot	✓	✓	✓	✓	✓	✓	✓	✓	on	✓	✓	✓	✓
UK_2015_hhot	✓	✓	✓	✓	✓	✓	✓	✓	✓	on	✓	✓	✓
UK_2016_hhot	✓	✓	✓	✓	✓	✓	✓	✓	✓	✓	on	✓	✓
UK_2014_a7	on	on	on	on	on	on	on	on	on	on	on	on	or
UK_2017_hhot	✓	✓	✓	✓	✓	✓	✓	✓	✓	✓	✓	✓	or
UK_2015_a4	on	on	on	on	on	on	on	on	on	on	on	on	or
UK_2018_hhot	✓	✓	✓	✓	✓	✓	✓	✓	✓	✓	✓	✓	✓
UK_2016_a4	on	on	on	on	on	on	on	on	on	on	on	on	or
UK_2017_a4	on	on	on	on	on	on	on	on	on	on	on	on	or
UK_2016_b5	on	on	on	on	on	on	on	on	on	on	on	on	or
UK_2019_hhot	✓	✓	✓	✓	✓	✓	✓	✓	✓	✓	✓	✓	✓
UK_2017_b4	on	on	on	on	on	on	on	on	on	on	on	on	or
UK_2020_hhot	✓	✓	✓	✓	✓	✓	✓	✓	✓	✓	✓	✓	✓
UK_2018_a3	on	on	on	on	on	on	on	on	on	on	on	on	or
UK_2018_b3	on	on	on	on	on	on	on	on	on	on	on	on	or
UK_2021_hhot	✓	✓	✓	✓	✓	✓	✓	✓	✓	✓	✓	✓	✓
UK_2022_hhot	✓	✓	✓	✓	✓	✓	✓	✓	✓	✓	✓	✓	✓
UK_2023_hhot	✓	✓	✓	✓	✓	✓	✓	✓	✓	✓	✓	✓	✓
UK_2024_hhot	✓	✓	✓	✓	✓	✓	✓	✓	✓	✓	✓	✓	✓
UK_2019_a1	on	on	on	on	on	on	on	on	on	on	on	on	or
UK_2019_b1	on	on	on	on	on	on	on	on	on	on	on	on	or
UK_2025_hhot	✓	✓	✓	✓	✓	✓	✓	✓	✓	✓	✓	✓	✓
sc_2019_b1	on	on	on	on	on	on	on	on	on	on	on	on	or

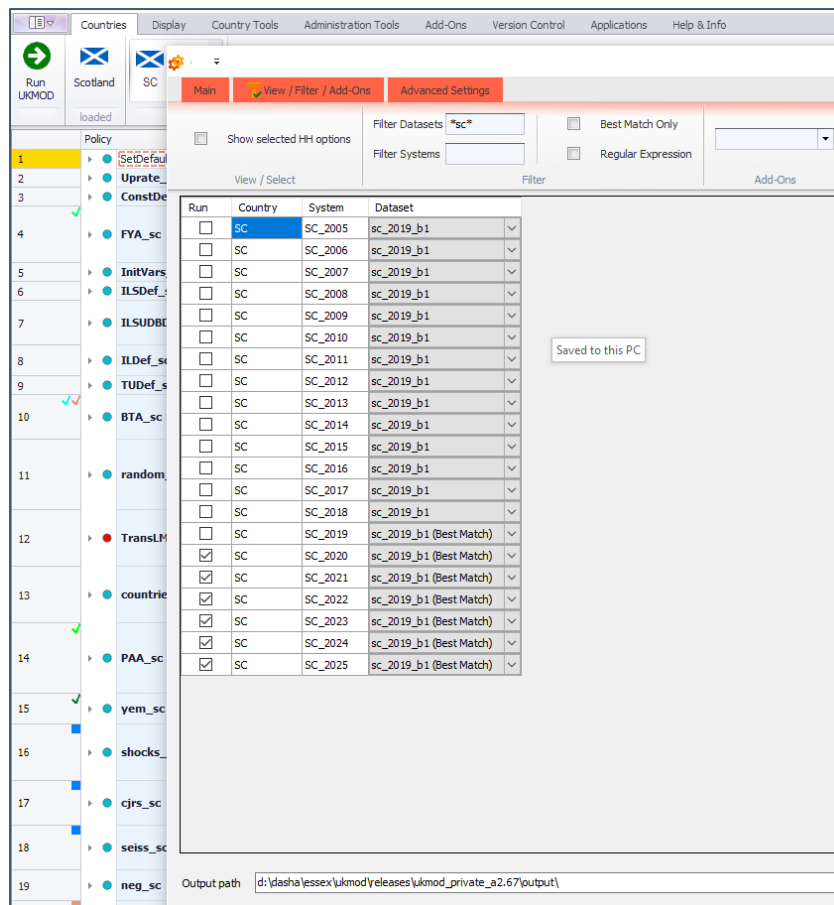
OK Cancel

(the figure displays the example of Scotland)

Then press 'OK'.

3. Run UKMOD using the national dataset

To run the model with the national dataset, simply go to Countries > Run UKMOD and select the national dataset for the relevant policy systems:



(the figure displays the example of Scotland)

Then press 'OK'.